

Map to
Corporate Social Responsibility Conference 2/27/09
Held at Applied Materials, 9700 E. Hwy 290, Bldg #34

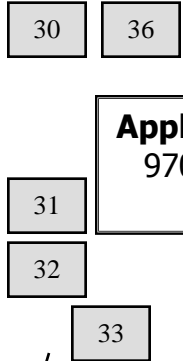


WATCH YOUR ODOMETER-

When you come to Giles Road, you continue East on Hwy 290 approximately 0.3 (3/10) miles and then turn Left into Applied Materials (at this Left Turn there is no stoplight or street sign)

Applied Materials

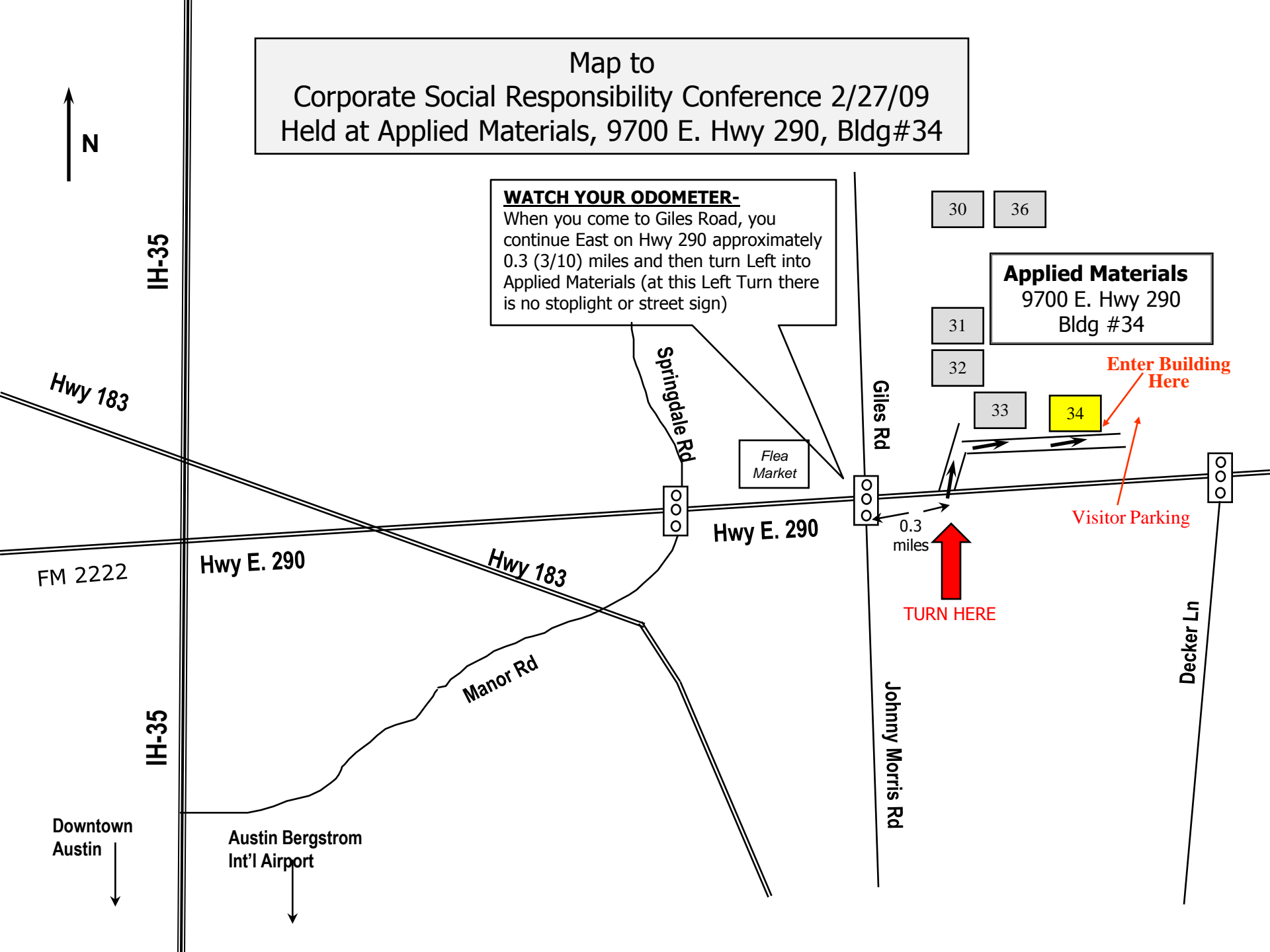
9700 E. Hwy 290
Bldg #34



Enter Building Here

Visitor Parking

TURN HERE



IH-35

Hwy 183

FM 2222

Hwy E. 290

Hwy 183

Manor Rd

Springdale Rd

Hwy E. 290

Giles Rd

Johnny Morris Rd

Decker Ln

Downtown Austin

Austin Bergstrom Int'l Airport

Flea Market

0.3 miles

30 36

31 32

33 34